

The College is Located at Tribal Hilly and Arduous Area



GRAMVIKAS MANDAL'S MOLGI SANCALIT

PRADNYA SR. COLLEGE OF ARTS MOLGI

Tal. Akkalkuwa Dist. Nandurbar (M.S.) Pin- 425452

Affiliated to K.B.C.N.M.U. Jalgaon Letter No. NMU/5-A/N. 70/3361/01 Date 10-09-2001

A/I Principal
Dr. Suhas B. Nandre
(M.A.M.PHIL.NET,Ph.D.)
Mo.- 7588735204

Email- pradnyacollegemolgi2@gmail.com, website- www.pcmolgi.com

Out No.PCM/-

Date-

6.1.1: The institutional governance and leadership are in accordance with the vision and mission of the Institution and it is visible in various institutional practices such as NEP implementation, sustained institutional growth, decentralization, participation in the institutional governance and in their short term and long-term Institutional Perspective Plan.

Organogram



A/I PRINCIPAL

Pradnya Sr. College of Art's
Molgi, Tal. Akkalkuwa Dist. Nondurbar

The College is Located at Tribal Hilly and Arduous Area



GRAMVIKAS MANDAL'S MOLGI SANCALIT

PRADNYA SR. COLLEGE OF ARTS MOLGI

Tal. Akkalkuwa Dist. Nandurbar (M.S.) Pin- 425452

Affiliated to K.B.C.N.M.U. Jalgaon Latter No. NMU/5-A/N. 70/3361/01 Date 10-09-2001

A/I Principal
Dr. Suhas B. Nandre
(M.A.M.PHIL.NET,Ph.D.)
Mo. - 7588735204

Email- pradnyacollegemolgi2@gmail.com, website- www.pcmolgi.com

Out No.PCM/-

Date-

GOVERNANCE, LEADERSHIP AND MANAGEMENT

Gramvikas Mandal



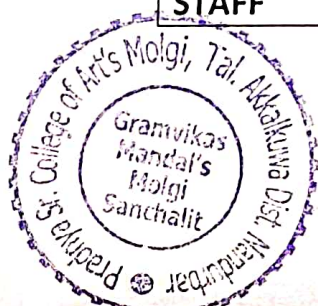
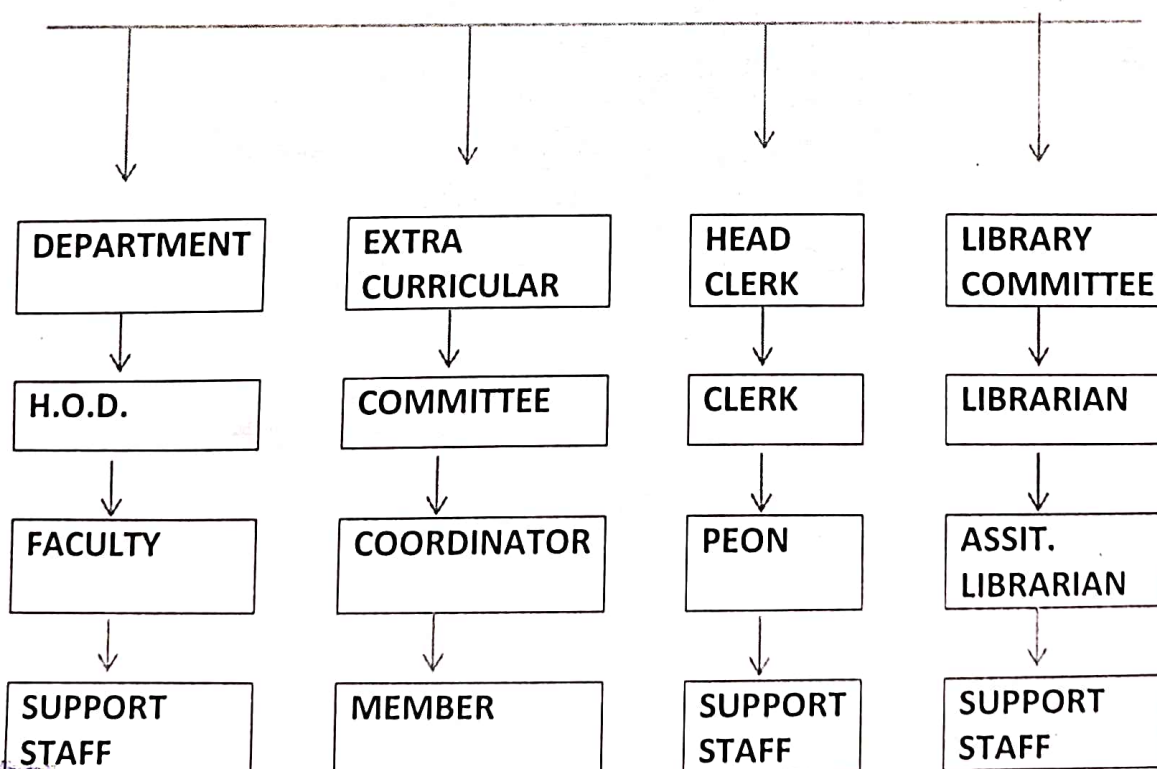
College Development Committee



Internal Quality Assurance Cell



Principal




A/I PRINCIPAL

Pradnya Sr. College of Art's
Molgi, Tal. Akkalkuwa Dist. Nondurbar